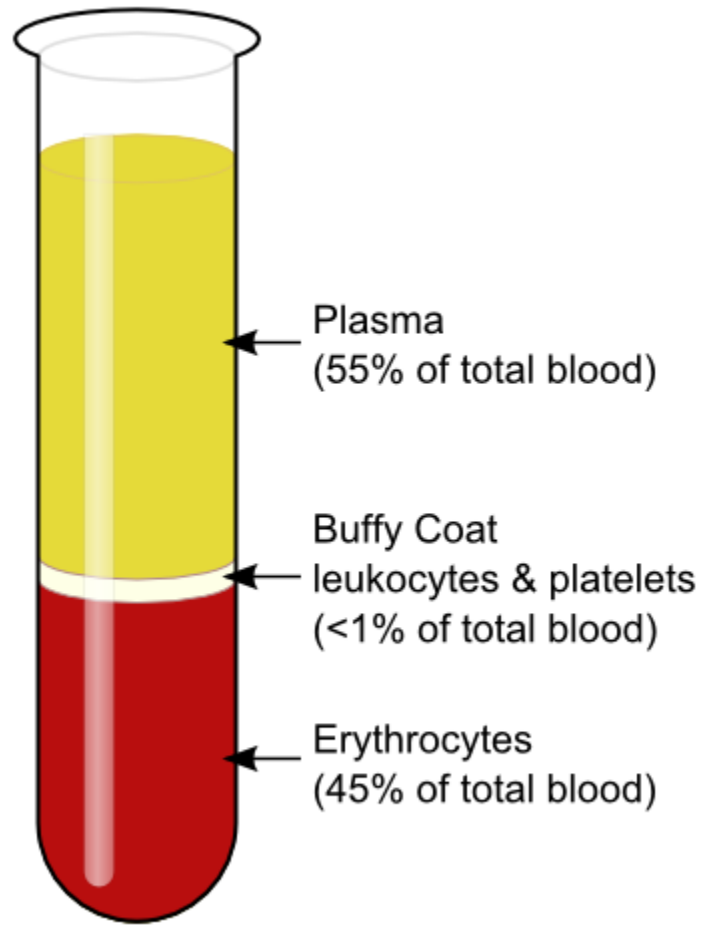
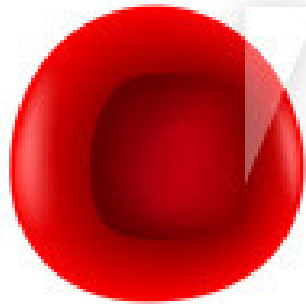


Blood Cells

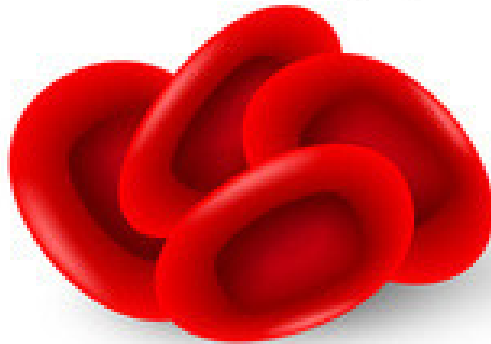


Blood Cells

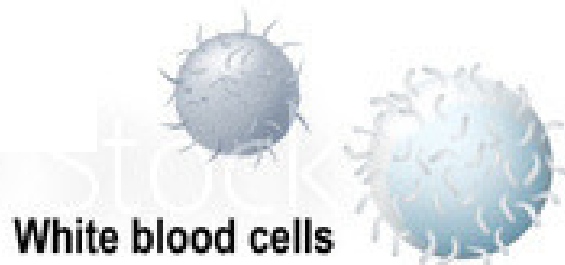
**Red Blood Cells
(Erythrocytes)
Carry oxygen**



**Red blood cells
(erythrocytes)**



Blood Cells

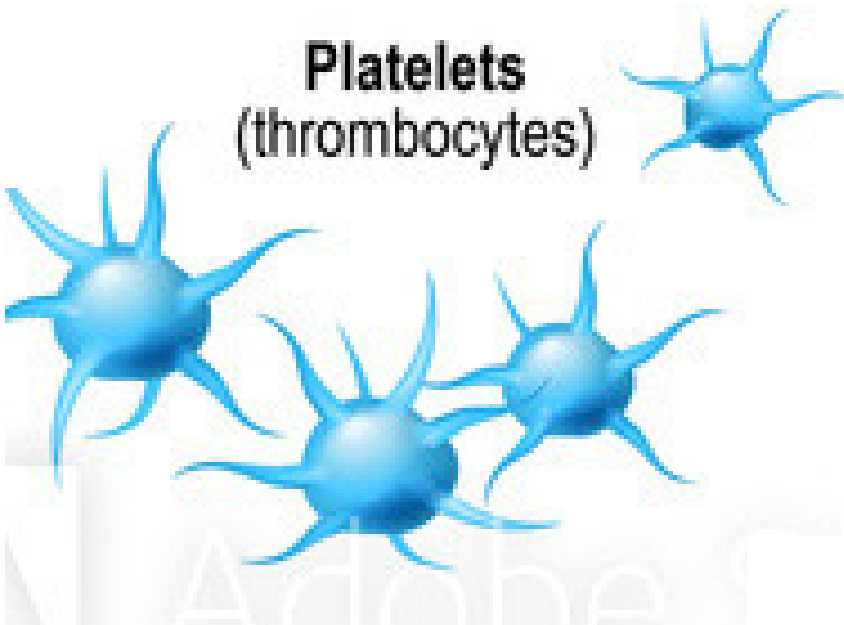


White Blood
Cells
(Leucocytes)
Defend against
invading
pathogens



Blood Cells

Platelets
(thrombocytes)



Platelets
(Thrombocytes)
Form blood
clots

Blood Cells

All blood cells are produced in the red bone marrow.

Platelets (Thrombocytes) &

Red Blood Cells (Erythrocytes)

Broken down by the spleen & recycled by the liver.

4 Blood types

A

B

AB

O

Which type shares with which?

AB is the Universal Recipient.

O is the Universal Donor.

Which type shares with which?

AB is the Universal Recipient.

O is the Universal Doner

Which type shares with which?

